

muster  
Scan Laser

532nm Pattern Scan Laser Photocoagulator

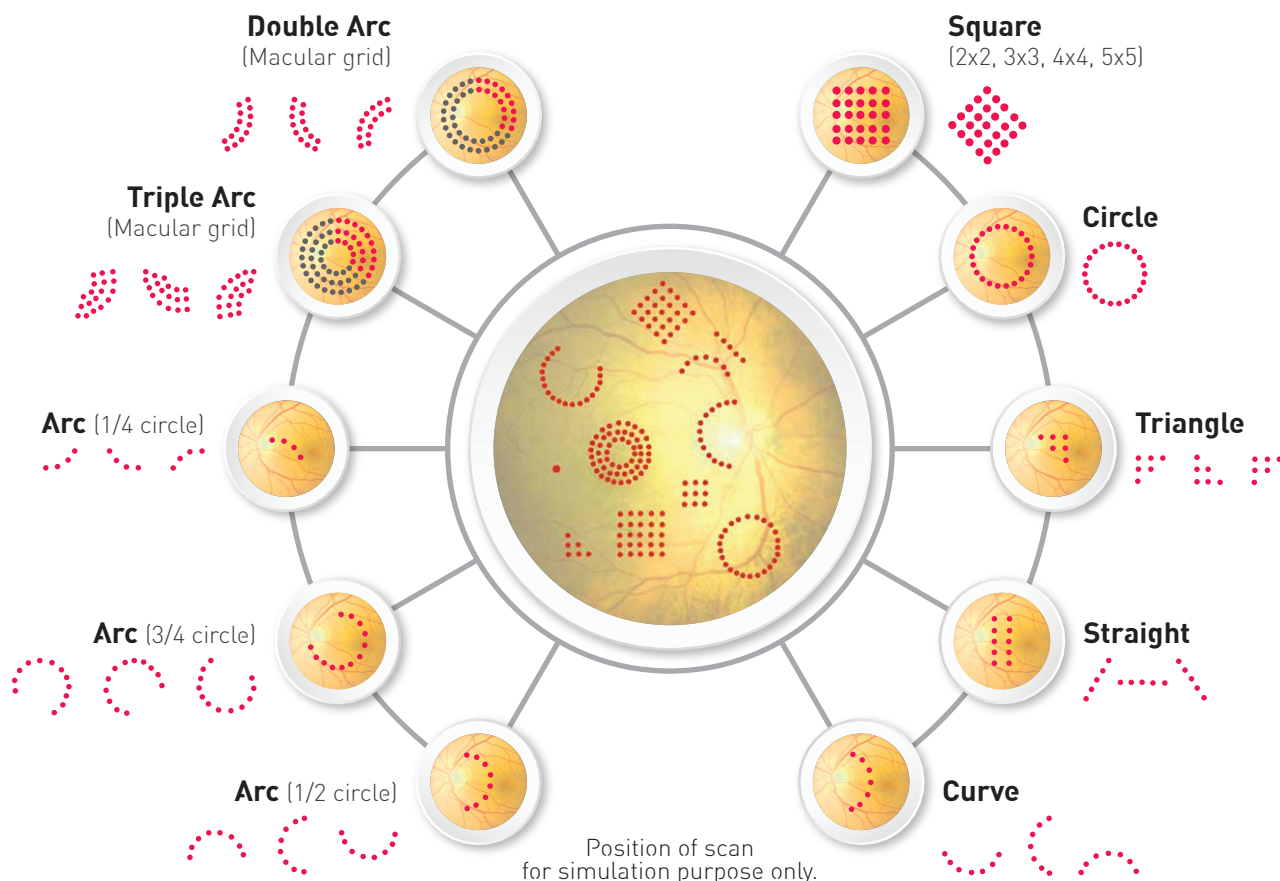


## Green Laser Photocoagulator

- Ideal product for Retinal Therapy.
- Powerful & Reliable: The Diode Pumped Solid State technology cavity delivers 3 W of power from the compact system.

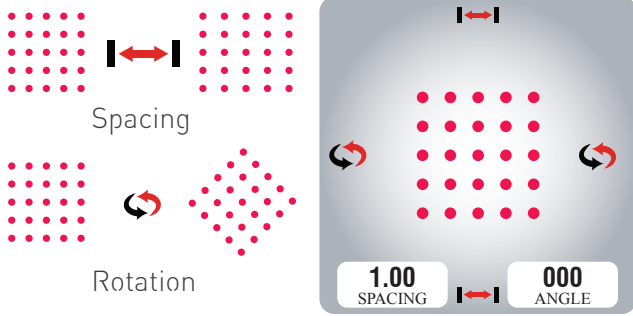


## Largest Selection of Scanning Laser Patterns



## Muster 532nm Features

- Incorporating scan delivery units enables laser treatments with various scan patterns. There are pre-programmed scan patterns to allow treatment of varying retinal pathologies. It enhances treatment efficiency and reduces patient chair time
- ParFocal zoom system - delivering a homogeneous, sharply defined and reproducible laser spot to the retina without heat-related side effects on the patient's cornea.
- Programmable Parameter Presets.
- Laser and illumination are co-axially synchronized for increased ergonomics
- Patterns for a quick, simple and efficient laser therapy
- True color active physician safety filters coupled with therapy laser - for a brilliant slit lamp image.
- Thermoelectric cooling with enhanced Laser stability management - for reliable and reproducible laser therapy results without performance fluctuations.



### Convenient adjustment of spacing and rotation

- The spacing between spot for each pattern can be changed and pattern can be rotated easily.



### Motorized variable spot size

- The single spot size is variable from 50 to 500µm
- Pattern spot size 100 to 500 µm
- The spot size can be varied easily using touch screen



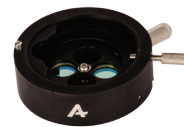
### User Friendly Interface

- Control Panel and Full touch graphical colour display put all your operations in fingertips
- Easy Selection of delivery system



### Foot pedal with Power Controls

- Convenience of hands free adjustment
- Uninterrupted procedure for increased visual focus



### Optional Accessories Microscope Safety Filter

## Delivery System Options



LABOMED Integrated Slitlamp with 5 step Magnification



LIO integrated with Keeler (Wire and Wireless), provides unique controls of aperture size and spot position.



Endo Ocular Probes (20, 23, 25 gauge - straight & Curved)

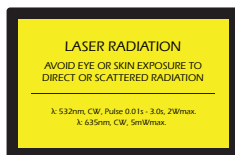


### External Laser Delivery System (ELDS)

- Single spot delivery at slitlamp working distance
- Spot size 50 -500µm
- Easy to adopt any slitlamp Tono mount

# Technical Specification

Laser type	Diode-pumped solid-state laser 532nm wavelength
Laser power	SLA & LIO mode: 1500mW at cornea ENDO mode: 2000mW at cornea
Exposure time (single spot)	10mS - 10Sec
Exposure interval (single spot)	10mS - 10Sec
Aiming beam	635nm diode laser, adjustable brightness upto 1mW
Patterns	Single, line, triangle, square (2x2, 3x3, 4x4, 5x5), circle (single, double, triple), arc (single, double, triple 1/4, 1/2, 3/4)
Pattern exposure duration	10mS - 50mS
Spot size	Single: 50µm, 100µm, 200µm, 300µm, 400µm, 500µm Pattern: 100µm, 200µm, 300µm, 400µm, 500µm spacing and 360° rotation available
Cooling system	Thermoelectric cooler and fan cooled
Electrical requirement	100 - 240 VAC, 50 / 60 Hz
Dimensions	Console: 19cm(H)x30cm(W)x30cm(L) SLA table: 73cm(H)x100cm(W)x40cm(L)
Weight	Console: 6 Kg / 13.2 lbs SLA table: 63 Kg / 139 lbs



Mfg by:  
**AEON MEDITEC(INDIA) PRIVATE LIMITED**  
Plot No. 13, Door No. 4, 5<sup>th</sup> Cross Street, 2<sup>nd</sup> Main Road,  
Sri Lakshmi Nagar, Valasaravakkam, Chennai - 600087  
www.aeonmeditec.com | info@aeonmeditec.com |  
(+91-44) 42840149 | +91-8012531317

Distributed by:



**Disclaimer:** Specifications are subject to change, without prior notice. The information contained in corresponds to the state of art and alterations.